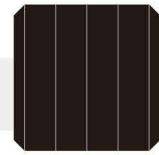


ZXM6-60 Series

Znshinesolar 5BB Monocrystalline PV Module



60

Mono Poly Solutions

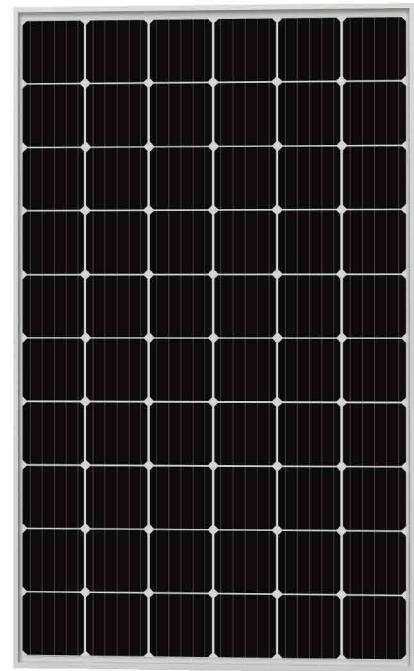
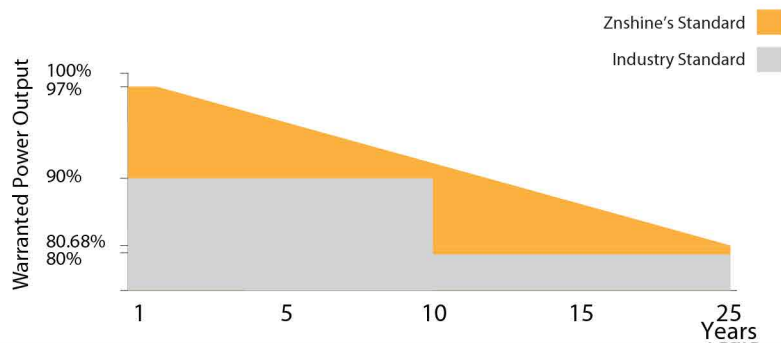
275W | 280W | 285W | 290W | 295W | 300W | 305W | 310W

Made with selected materials and components to grant quality, duration, efficiency and through outputs, the ZXM6-60 monocrystalline modules by ZNSHINE SOLAR represent a highly flexible solution for diverse installation types, from industrial rooftop plants to small home PV systems or large ground surfaces. This allows you to produce clean energy while reducing your energy bill.

ZNSHINE SOLAR' S ZXM6-60 monocrystalline solar modules are tested and approved by international acknowledged laboratories, so that we can offer our customers a reliable and price-quality optimized product. The linear warranty on product outputs further ensures increased security and return on investments over time.

10 years workmanship warranty/25 years output warranty

0.68% Annual Degradation over 25 years



5 Busbar Solar Cell

No power loss thanks to improved temperature co-efficient caused by 5 busbar solar cell



High Efficiency

Graphene coating can increase about 2W of the module efficiency by rising around 0.5% of the light transmission



Anti PID

Limited power degradation of ZXM6-60 module caused by PID effect is guaranteed under strict testing condition for mass production



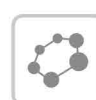
Linear Warranty

25-year linear warranty on outputs



Certified to withstand the most challenging environmental conditions

5400 Pa snow load
2400 Pa wind load



Customerization—Graphene Coating

Graphene coating modules can increase power generation and self-cleaning, also can save maintenance cost



ZNShine PV-Tech Co., LTD, founded in 1988, is a world-leading high-performance PV module manufacturer, PV power station developer, EPC and power station operator. With its state-of-the-art production lines, the company boasts module output of 3.2GW. Bloomberg has listed ZNShine as a global Tier 1 PV manufacturer and Top 10 reliable PV supplier.

www.znshinesolar.com

ELECTRICAL PROPERTIES | STC*

Module Type	ZXM6-60-275/M	ZXM6-60-280/M	ZXM6-60-285/M	ZXM6-60-290/M	ZXM6-60-295/M	ZXM6-60-300/M	ZXM6-60-305/M	ZXM6-60-310/M
Nominal Power Watt Pmax(W)	275	280	285	290	295	300	305	310
Power Output Tolerance Pmax(%)	0~+3	0~+3	0~+3	0~+3	0~+3	0~+3	0~+3	0~+3
Maximum Power Voltage Vmp(V)	31.4	31.6	31.8	32.0	32.2	32.4	32.7	32.9
Maximum Power Current Imp(A)	8.76	8.87	8.97	9.07	9.17	9.26	9.33	9.43
Open Circuit Voltage Voc(V)	38.7	38.9	39.1	39.3	39.5	39.7	39.9	40.1
Short Circuit Current Isc(A)	9.28	9.37	9.47	9.56	9.67	9.75	9.85	9.95
Module Efficiency (%)	16.80	17.11	17.41	17.72	18.02	18.33	18.63	18.94

*STC (Standard Test Condition): Irradiance 1000W/m², Module Temperature 25°C, AM 1.5
 *The data above is for reference only and the actual data is in accordance with the practical testing

ELECTRICAL PROPERTIES | NOCT*

Maximum Power Pmax(Wp)	203.4	207.4	211.3	214.5	219	222.3	225.8	229.3
Maximum Power Voltage Vmpp(V)	29.1	29.3	29.7	29.7	29.8	30.2	30.4	30.6
Maximum Power Current Impp(A)	7.00	7.08	7.12	7.23	7.34	7.36	7.42	7.49
Open Circuit Voltage Voc(V)	35.8	36.0	36.2	36.4	36.6	36.7	36.9	37.1
Short Circuit Current Isc(A)	7.50	7.57	7.57	7.72	7.81	7.81	7.88	7.96

*NMOT(Nominal module operating temperature):Irradiance 800W/m²,Ambient Temperature 20°C,AM 1.5,Wind Speed 1m/s
 *The data above is for reference only and the actual data is in accordance with the practical testing

TEMPERATURE RATINGS

NMOT	45°C ±2°C
Temperature coefficient of Pmax	-0.39%/K
Temperature coefficient of Voc	-0.29%/K
Temperature coefficient of Isc	0.05%/K

MECHANICAL DATA

Solar cells	Mono 156.75×156.75 mm
Cells orientation	60 (6×10)
Module dimension	1650×992×35 mm
Weight	19.5 kg
Glass	High transparency,low iron,tempered
	Glass 3.2 mm (AR-coating)
Junction box	IP 68, 3 diodes
Cables	H1Z2Z2-K 1×4,0mm ²
Connectors	LJQ-1

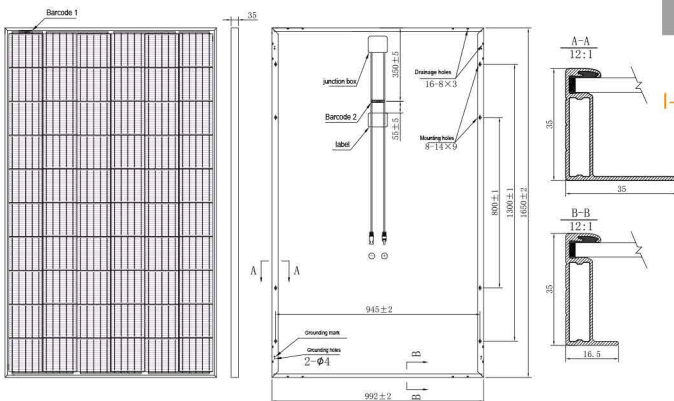
WORKING CONDITIONS

Maximum system voltage	1000 / 1500 V DC
Operating temperature	-40°C~+85°C
Maximum series fuse	15 A
Maximum load(snow/wind)	2400/2400 (with safety factor 1.5)

PACKAGING INFORMATION

Packing Type	40' HQ
Piece/Box	30
Piece/Container	840

DIMENSION OF THE PV MODULE (mm)



I-V CURVES OF THE PV MODULE

